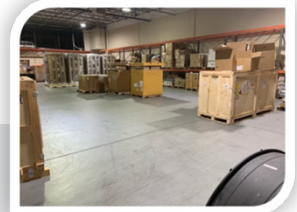




**SOLUTION BRIEF**



# BlueAlly Integration Center



BlueAlly's integration center is a one-stop resource for integration and delivery of multi-vendor infrastructure and workplace solutions.

The integration center, centrally located in the US, is secured with remote surveillance and monitoring, and has AC and DC electrical capabilities. Services are available for compute, storage, converged, wired and wireless network, security, and voice.

## Solution Features:

- Validation of hardware functionality
- Cost savings from reduced on-site time and expense
- Loading dock for large volume or over-sized devices
- Inventory management and asset tagging
- Eliminates need for physical space requirements at client site
- Great for multi-vendor environment and projects
- Hardware integration
- Burn-in process
- Installation of operating system software
- Firmware/software upgrades
- System configuration
- Full asset/inventory tracking
- Package and ship (palletized or boxed and wrapping available)
- On-site assistance for unpacking, racking and stacking
- Implementation services – on-site or remote
- Post cut-over support

## Why BlueAlly?

- Your team remains focused on business-impacting projects while we provide management, monitoring and support for you.
- BlueAlly is an extension of your staff to gain economies of scale and more predictable costs.
- 24x7 device monitoring, management, and support

## Customer Examples:

- Tier 1 Service Provider deployment of multi-vendor voice application platform distributed across (200) sites on (4) continents.
- Staged, configured, and installed a VoIP phone system with over (30) sites and 4,000 handsets in 2 months
- Completed a LAN/WAN infrastructure refresh for a 50-building school district. The project completed 6 months early and included staging, configuration, and on-site implementation of (850) switches and 2,659 access points.

## About BlueAlly

We are a motivated and experienced team of IT industry professionals, delivering innovative solutions by employing proven, best-of-breed technologies.

## Contact Us

1225 Crescent Green, Suite 115, Cary, NC 27518

 [BlueAlly.com](https://www.blueally.com)

 [888.768.2060](tel:888.768.2060)